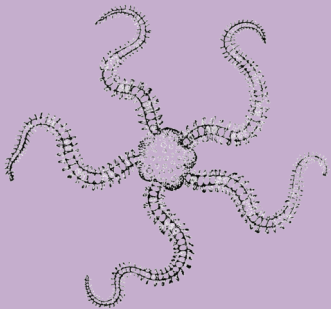


# Test your Taxonomy skills!



A taxonomist's job is to look at living things to try and work out what they are, what they could be called, how similar or different they are from other living things and to sort them into groups. You have to be very good at looking closely and spotting differences.

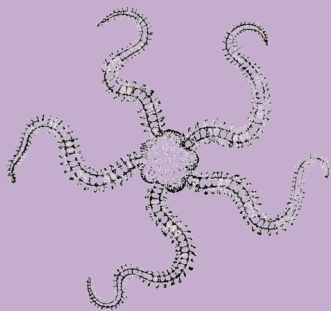
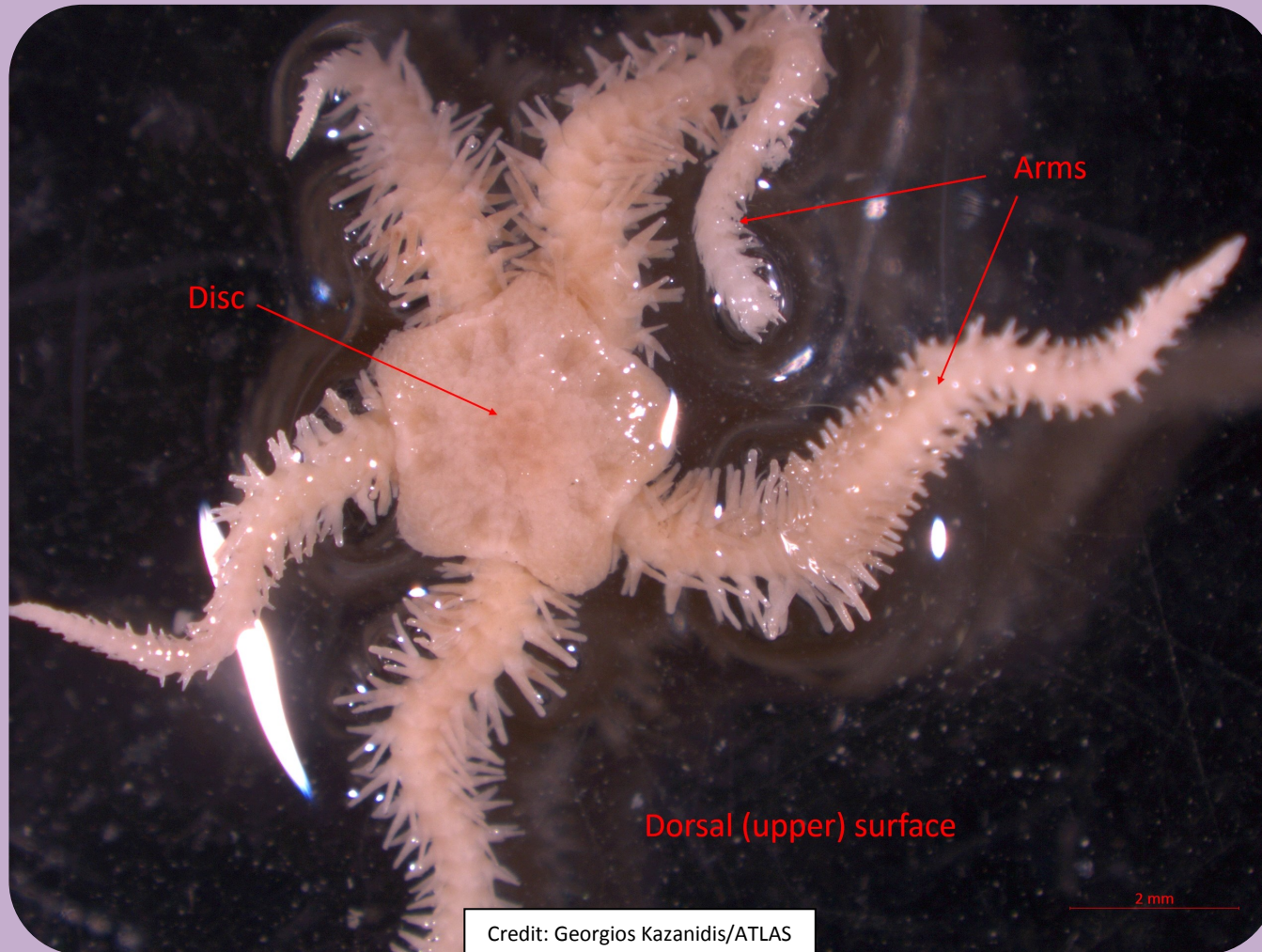
Have a go at this yourself! We have some pictures of 'Ophiuroids' or Brittle Stars (a bit like a starfish) collected from the Mingulay Reef in Scotland for you to practice with. Take a good look at the pictures 1-6 first to make sure that you can tell the difference. Then see if you can follow the key to work out the mystery Brittle Stars A, B and C. The answers are on the back!



*This project has received funding from the European Union's Horizon 2020 research and innovation programme under grant agreement No 678760 (ATLAS). This outcome reflects only the author's view and cannot be held responsible for any use that may be made of the information contained therein.*



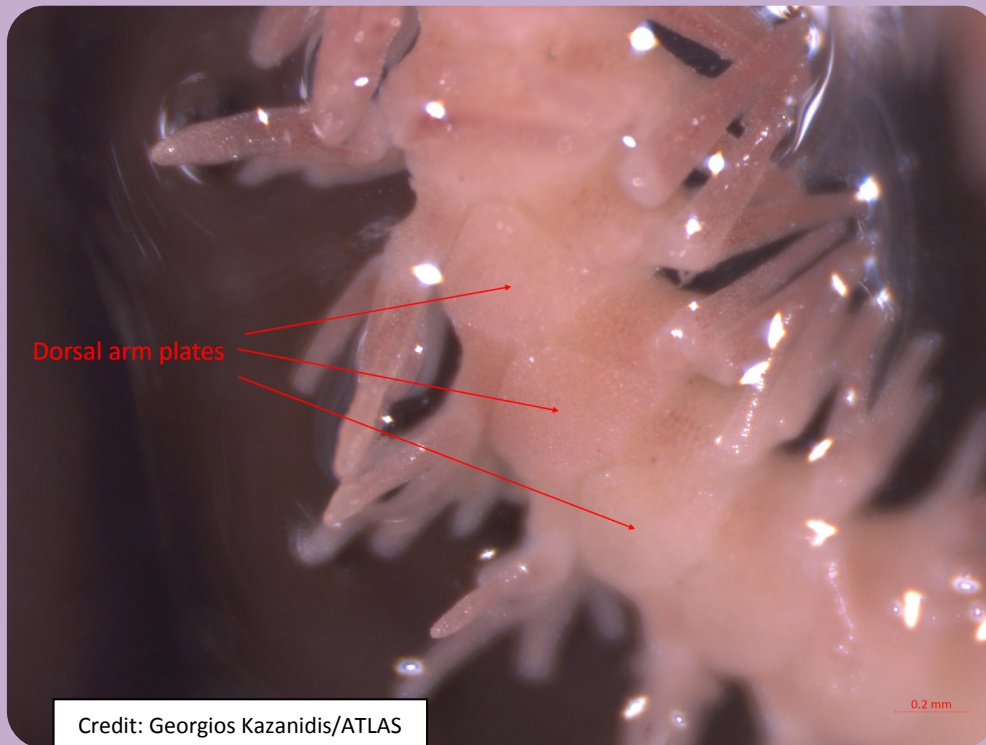
# Taxonomy Skills: Picture 1



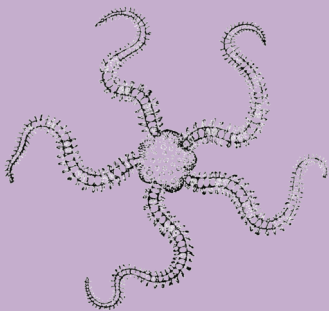
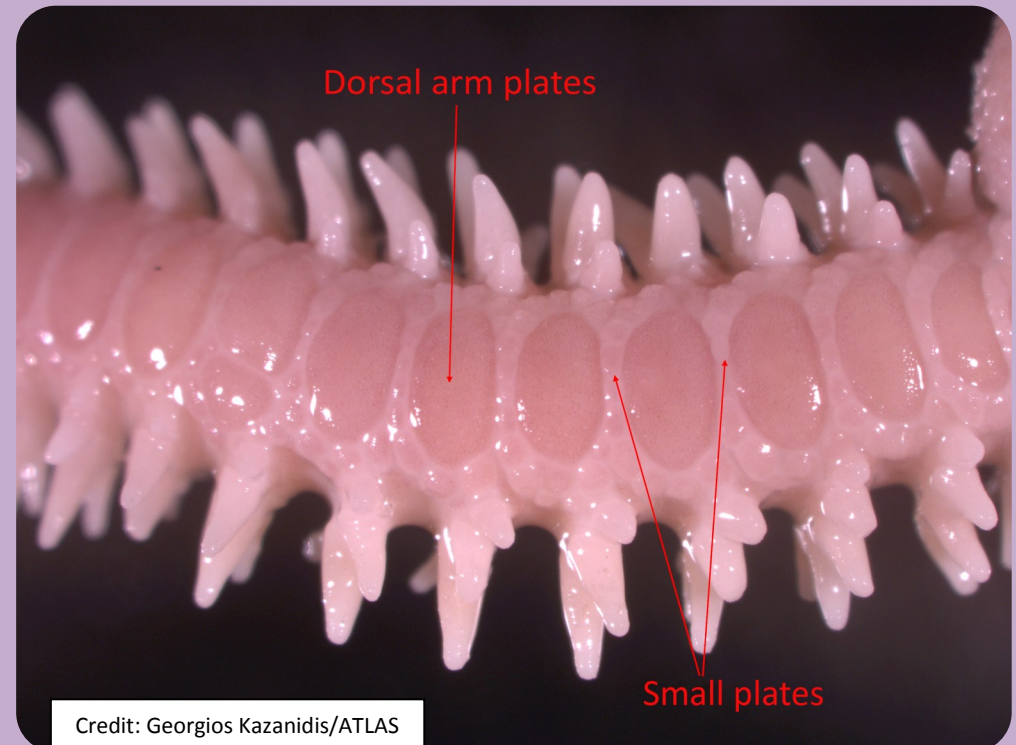
This picture shows you what a Brittle Star looks like from the top - you can see it's spiny body ( the disc) and spiny arms.

# Taxonomy Skills: Pictures 2 & 3

Picture 2



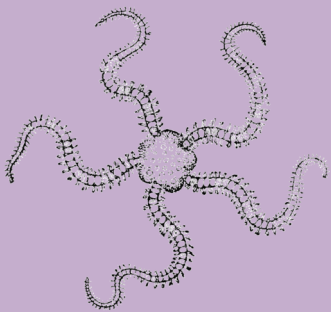
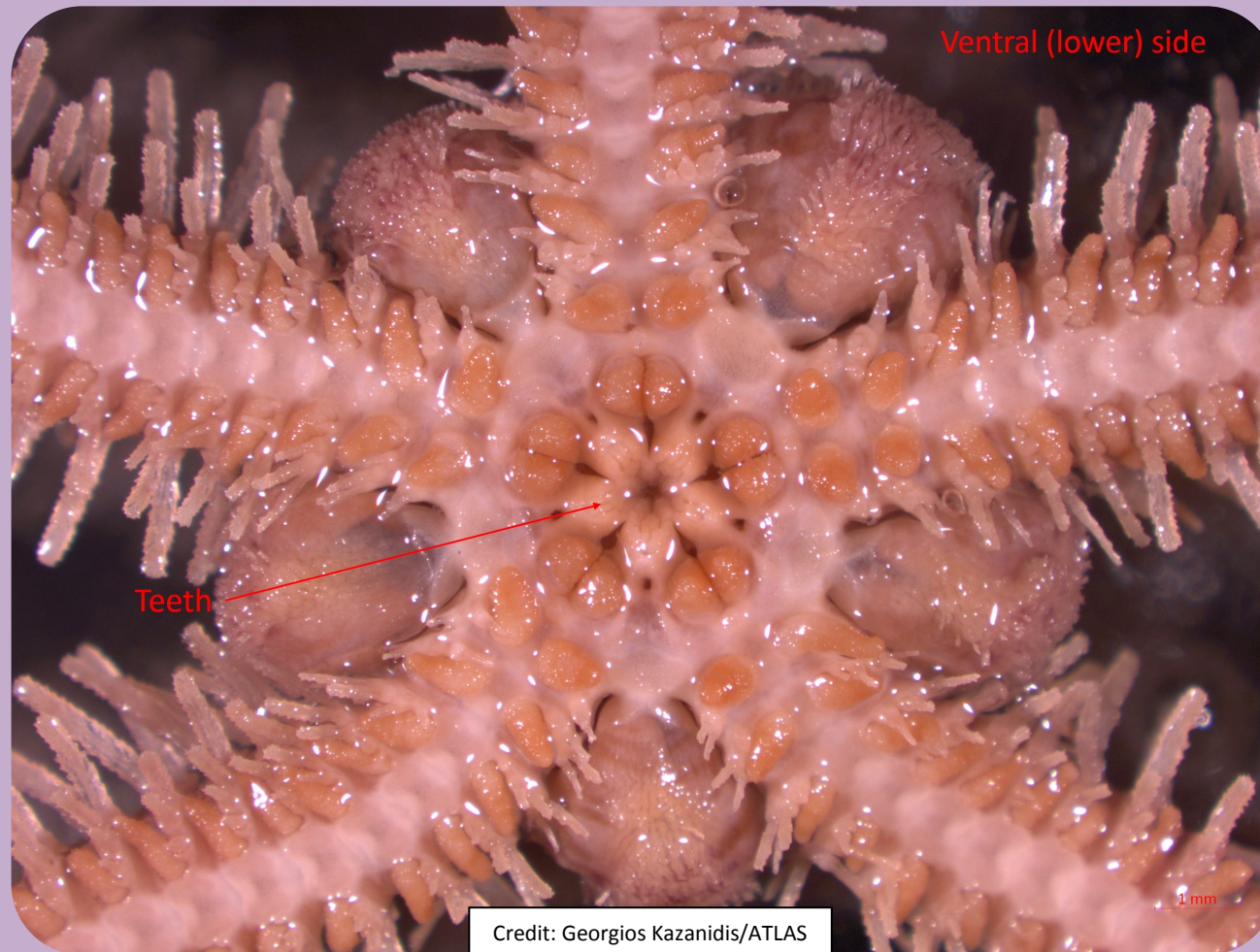
Picture 3



Close-ups of the top of two different Brittle Stars' arms.  
You can see parts of their skeleton called 'arm plates'. Look  
carefully at the plates - can you spot the difference?



# Taxonomy Skills: Picture 4



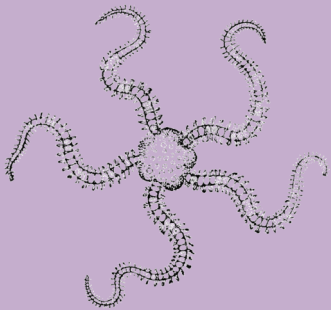
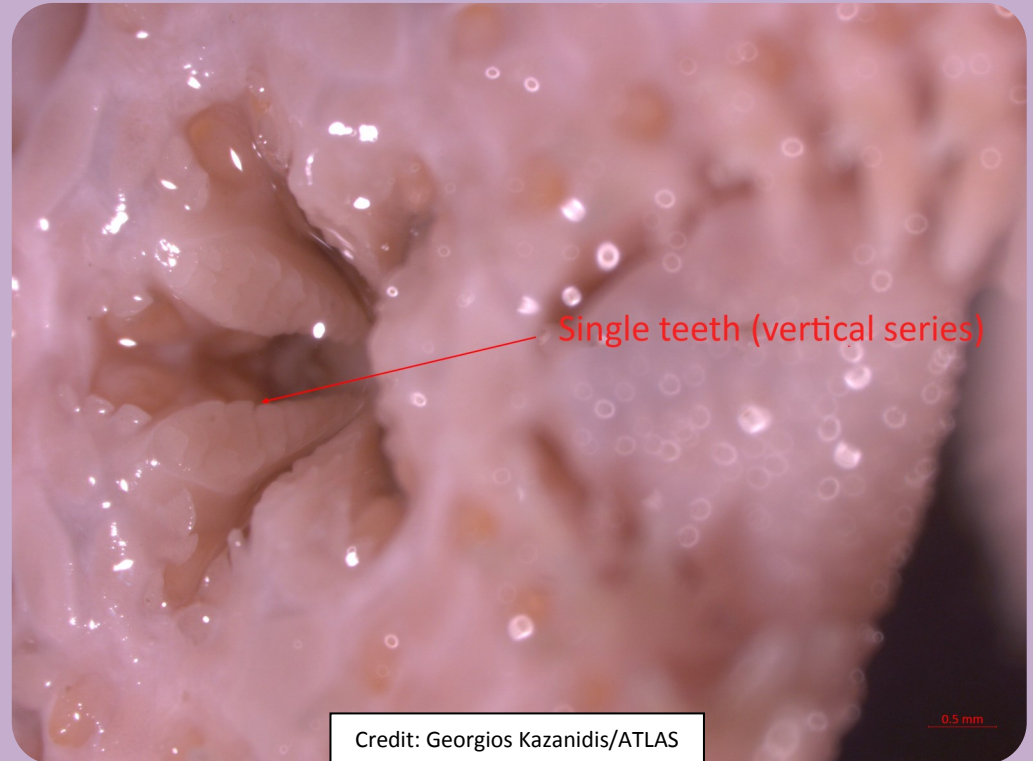
This picture shows you what a Brittle Star looks like from underneath - you can see it's mouth and teeth.

# Taxonomy Skills: Pictures 5 & 6

Picture 5



Picture 6



A close-up of two different Brittle Stars' teeth. Can you spot the difference?

# Taxonomy skills: Identify time!



Does it have tooth papillae like in Picture 5?

Yes

This is a Brittle Star called  
*'Ophiothrix fragilis'*

No/not sure

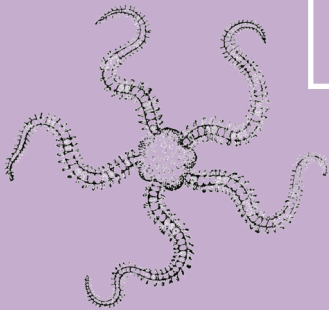
Are the big arm plates surrounded  
by little ones like in Picture 3?

Yes

This is a Brittle Star called  
*'Ophiopholis aculeata'*

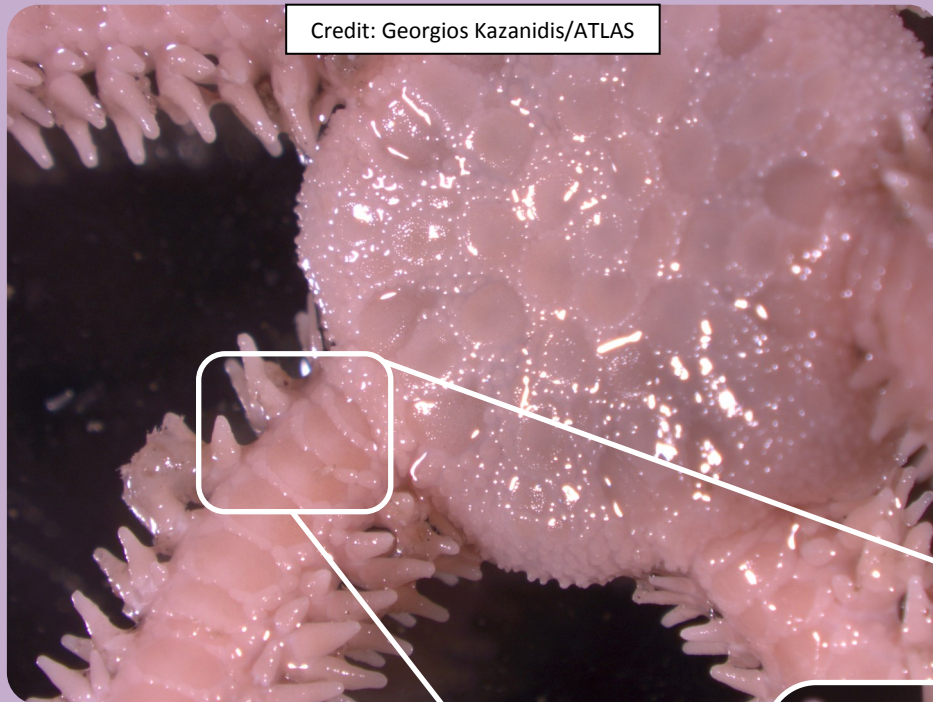
No

This is a Brittle Star called  
*'Ophiactis balli'*

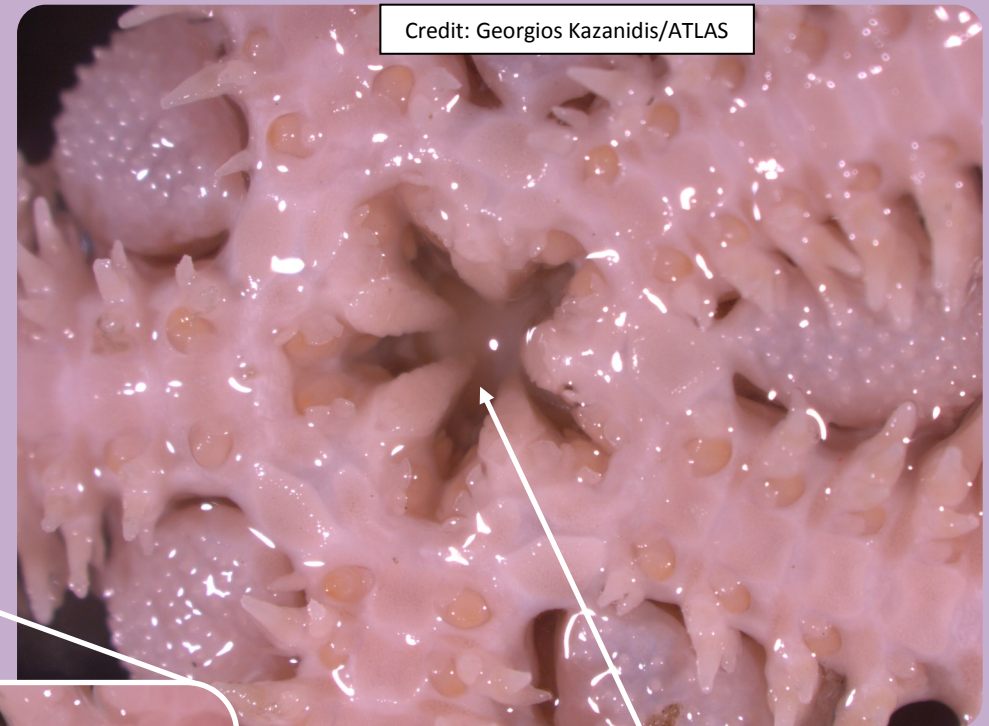
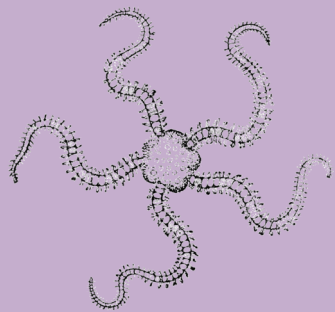




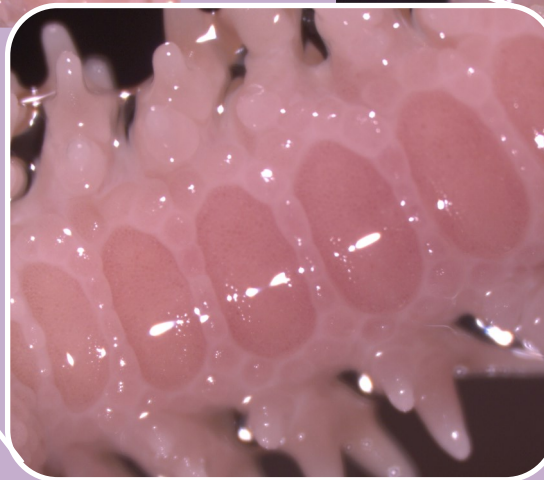
# Mystery Brittle Star A



Top of the Brittle Star



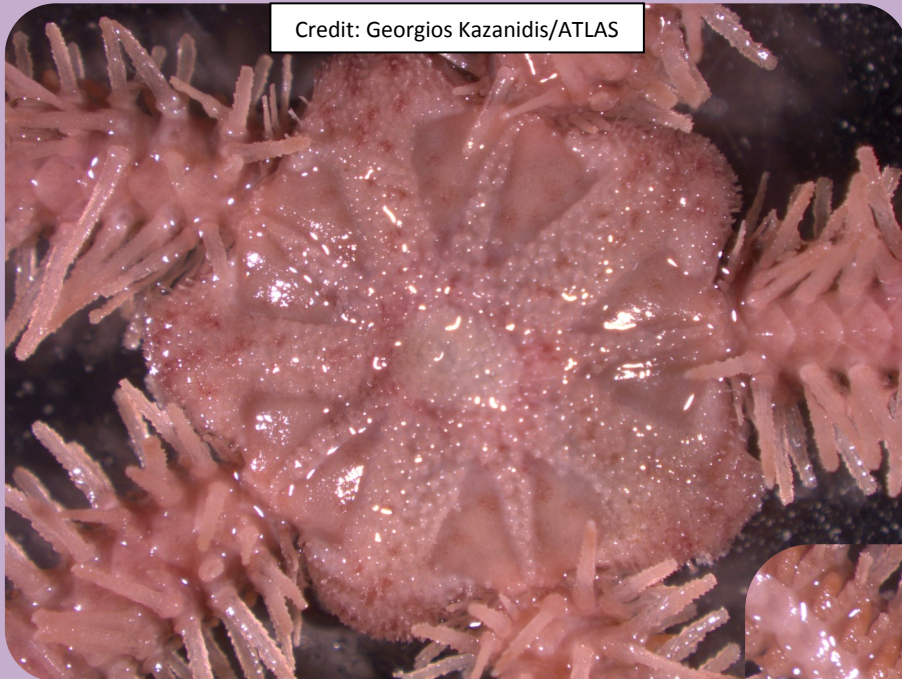
Teeth!



*Answer: Ophiopholis aculeata*

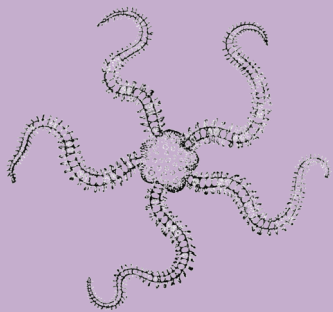


# Mystery Brittle Star B

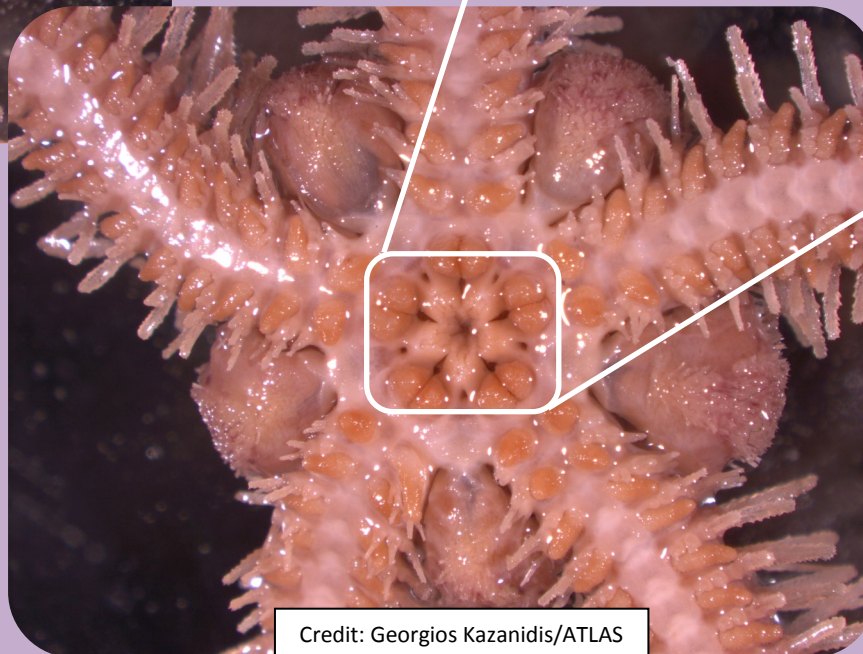


Credit: Georgios Kazanidis/ATLAS

Top of the Brittle Star



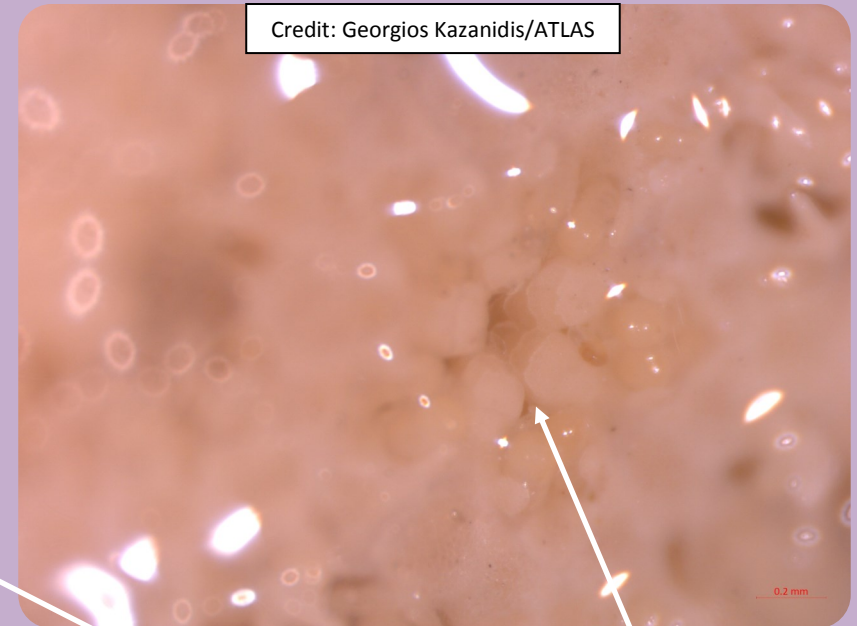
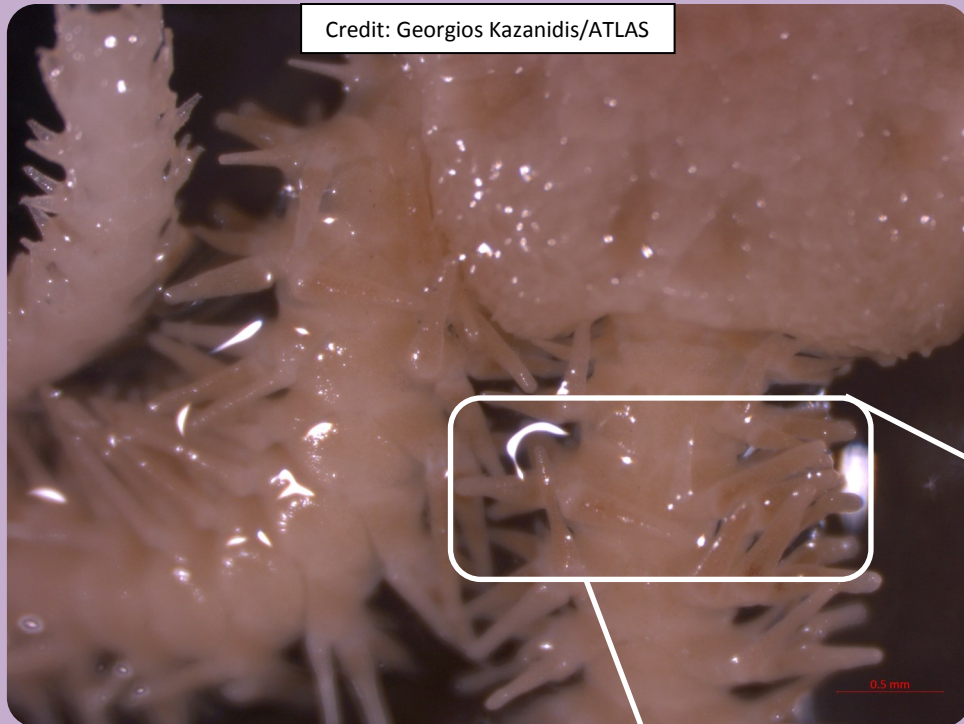
Teeth!



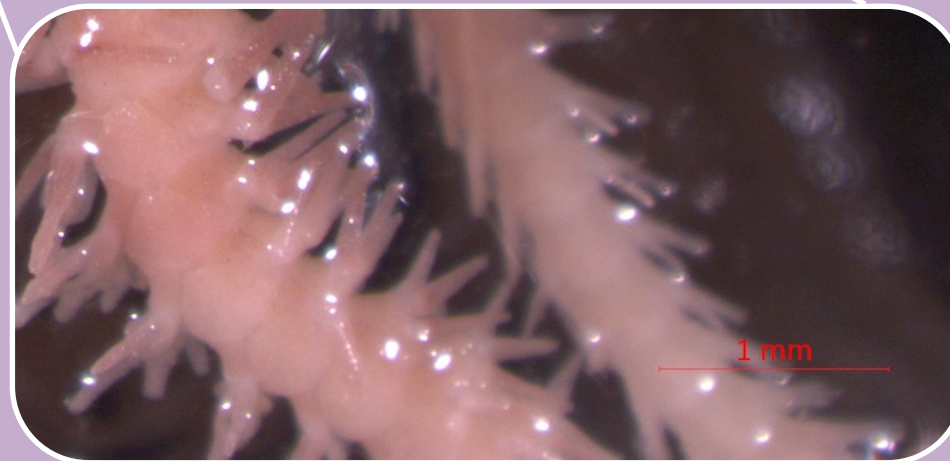
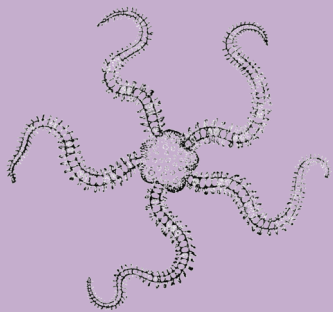
Credit: Georgios Kazanidis/ATLAS

*Answer: Ophiothrix fragilis*

# Mystery Brittle Star C



Top of the Brittle Star





*Answer: Opiactis balli*